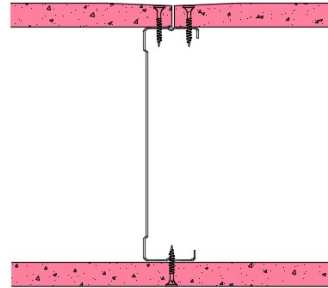


146-S-56 - SPEEDLINE System Data Sheet - Version V1 (24-10-23)

SPEEDLINE 146mm 'C' Stud Partition @600mm
Ctrs, with Siniat GTEC 15mm Fire Board each side



System Performance Breakdown

Fire Resistance:

BS476 Part 22:1987:

Test Ref & Date or Applied Ref & Report:

Max Height:

Thickness:

Duty Grade: BS 5234: Part 2:1992:

Sound Insulation:

60/60 Minutes (Integrity/Insulation).

BTC 17443F - BRE Report P102396-1011C

Refer to Speedline Specification Clause

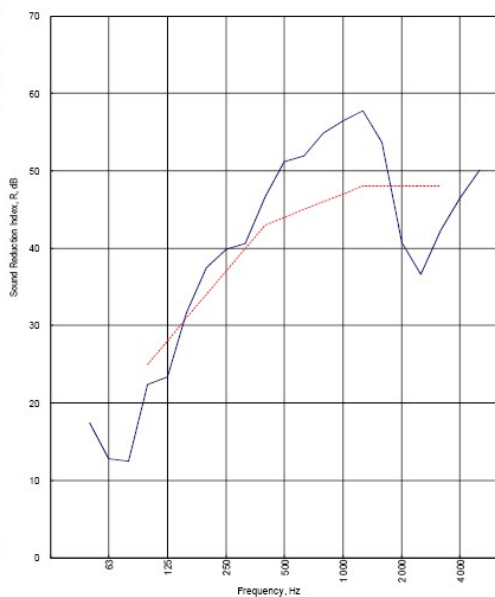
178 mm. (At Base Track, Excluding Finishes)

Heavy - Annexes A-F

44 R_w dB, Date Tested or Assessed Against - 08/07/2016

Test Code:
H19650AA
Test Date:
08/07/2016

Freq. Hz	R dB
50	17.4
63	12.8
80	12.5
100	22.4
125	23.3
160	31.7
200	37.5
250	39.9
315	40.6
400	46.6
500	51.2
630	51.9
800	54.8
1 000	56.5
1 250	57.8
1 600	53.7
2 000	40.7
2 500	36.6
3 150	42.3
4 000	46.4
5 000	50.1



Rating according to BS EN ISO 717-1:2013	R_w (C;Ctr) = 44 (-3;-6) dB		
Evaluation based on laboratory measurement results obtained by an engineering method:	$C_{50-3150}$ -5 dB	$C_{50-5000}$ -4 dB	$C_{100-5000}$ -2 dB
	$C_{tr,50-3150}$ -14 dB	$C_{tr,50-5000}$ -14 dB	$C_{tr,100-5000}$ -6 dB

TESTED AT ONE OF THE UKAS ACCREDITED LABORATORIES BELOW

- B.T.C (H-Ref on Graph)
- B.R.E
- AIRO
- S.R.L

Customer: Voestalpine Metsec Plc Dry Lining

BTC 19650A: Page 9 of 12



SPEEDLINE Drywall Systems, Adsetts House, 16 Europa View, Sheffield Business Park, Sheffield, S9 1XH.

Tel: 0114 231 8030.

Email: enquiries@speedlinedrywall.co.uk

(As per the requirements set out in ISO/IEC 17025:2017 regarding test data the results stated have been carried out by voestalpine Metsec plc as part of the contract to supply Speedline Metal Sections to SIG Plc)